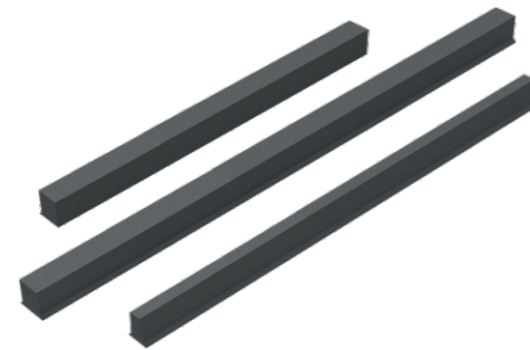


BETA Maschinenbau GmbH & Co. KG
 Nordhäuser Straße 2
 99765 Heringen
 Germany

@ magnettechnik@beta-mb.de

+49 36333 666-210

Quality
 Made in Germany



The BKS formworks made of **impact-resistant PE** with **integrated holding magnets** is the alternative to the BUS-M steel formwork **for twin walls and feligree slabs**.

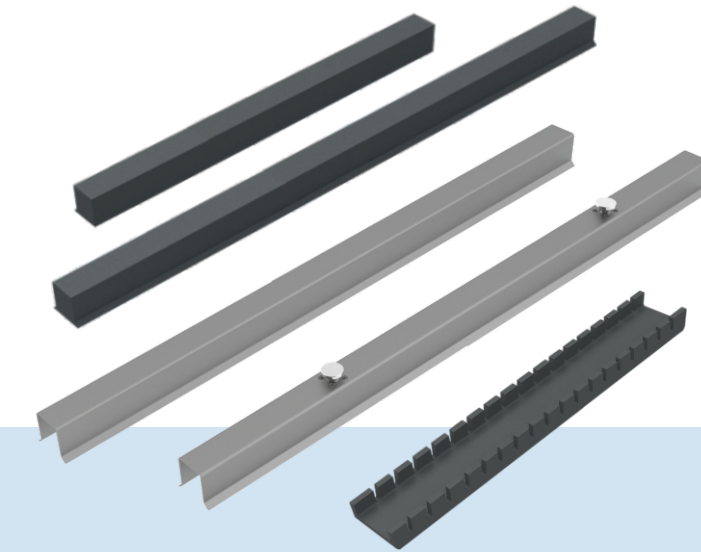
For use as cross and length formwork you can chose from two widths (40 and 60 mm), **three profiles** (with one, two or without chamfers), and different **versions of the end faces** (straight or slanted each with or without chamfer-cutout).



The formwork system BQS for the **production of feligree slabs** is available in different versions, which are specially fitted to your production.

The extruded **HDPE basic profile** is provided with reinforcement slots according to your specifications and prepared for **fixing** to the pallet **with holding magnets or end plates**.

It is also possible to equip it with robot holders.



PE formwork BKS

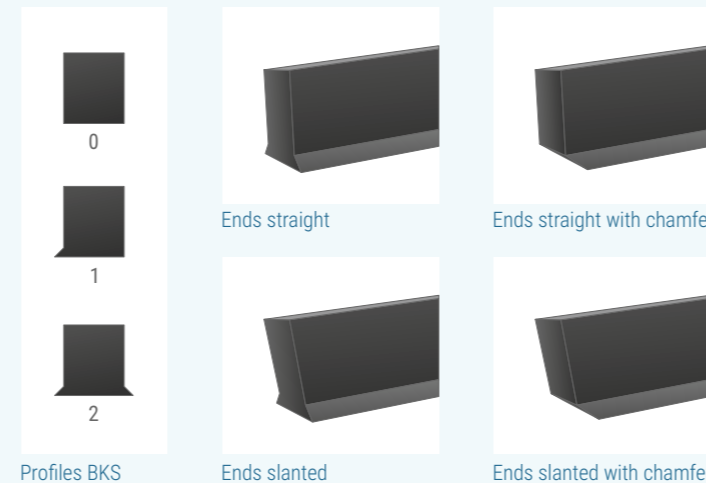
Type BKM	Height mm	Width mm	Chamfers number	Length mm
BKS 70/40/length	70	40	0	specification
BKS 70/40/length	70	40	1	specification
BKS 70/40/length	70	40	2	specification
BKS 70/60/length	70	60	0	specification
BKS 70/60/length	70	60	1	specification
BKS 70/60/length	70	60	2	specification

Cross formwork BQS

Type BKS	Height mm	Width mm	Length mm
BQS 70/145/length	70	145	specification
BQS 70/200/length	70	200	specification

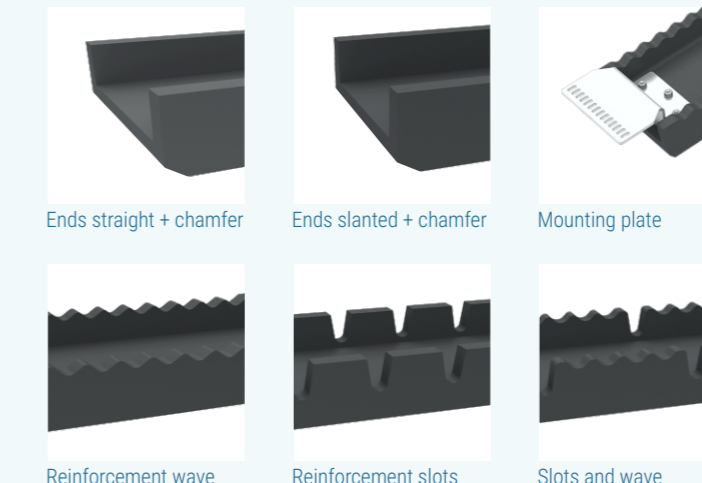
Standard versions

- Made of impact-resistant PE
- With integrated holding magnets
- For cross and length formwork
- Various profiles and end faces available



Standard versions

- For filigree slab production
- Made of high-strength, impact-resistant HDPE
- Fastening with magnets or mounting plates
- Customer defined reinforcement grid

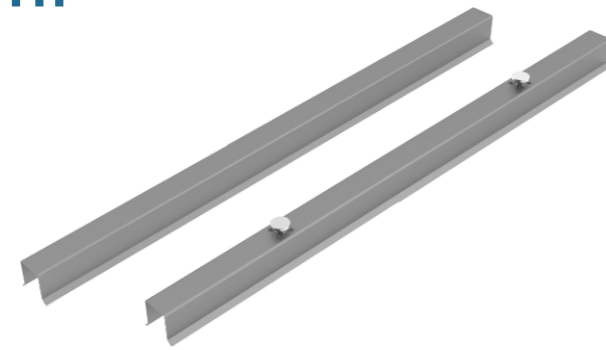


Formworks for circulation plants



For the production of twin walls and filigree slabs as well as solid concrete elements

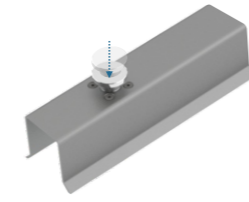
www.beta-mb.de



This robot-compatible formwork for twin walls and feligree slabs is available **without magnets (BUS)** or **with integrated magnets (BUS-M)**.

For use as cross and length formwork you can choose between three profiles (with one, two or without chamfers), and different end faces (straight or slanted with or without chamfer-cutout).

In addition, the formwork elements are available with side cutouts for stacking racks and cutouts for robot use.



BUS-M with integrated magnet



BUS with magnet BUM



The BCS formwork system was developed for the production of **solid or sandwich elements up to 400 mm high**.

This formwork system **focuses on customer-specific designs with individual profiles** for use in highly automated plants.

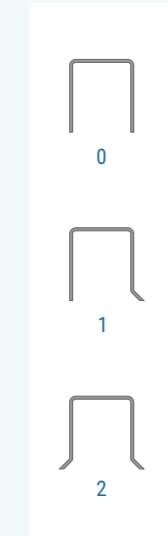
The **integrated switchable BETA high-performance magnets** are used to fix the formwork to the base.



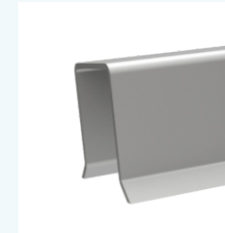
Circulation formwork BUS and BUS-M

Type BUS-M	Height mm	Width mm	Chamfers number	Length kg
BUS-M 70/60/length	70	60	0	specification
BUS-M 70/60/length	70	60	1	specification
BUS-M 70/60/length	70	60	2	specification

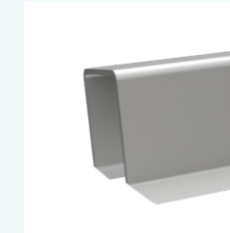
Type BUS	Height mm	Width mm	Chamfers number	Length kg
BUS 70/60/length	70	60	0	specification
BUS 70/60/length	70	60	1	specification
BUS 70/60/length	70	60	2	specification



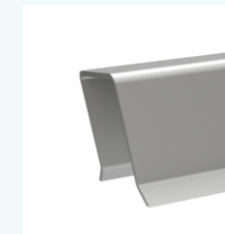
Profiles



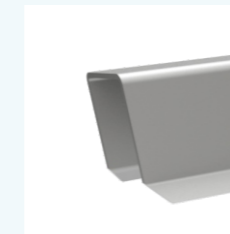
Ends straight



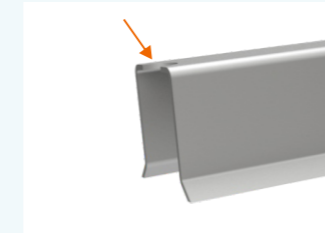
Ends straight with chamfer



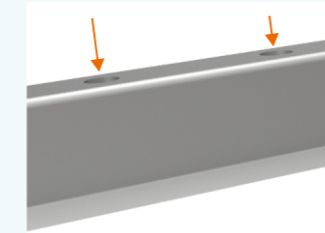
Ends slanted



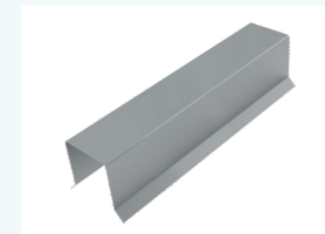
Ends slanted with chamfer



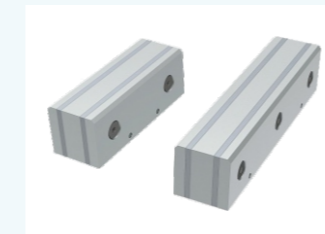
Cutouts for stacking racks



Cutouts for robot use



BUS Connecting profile



Circulation magnet BUM for BUS

Standard versions

- With or without integrated magnets
- For cross and length formwork
- Usable with formwork robots
- Various profiles and end faces available
- Suitable magnet BUM

Compact formwork BCS

Type BUS-M	Height mm	Width mm	Profile design	Length mm
BCS 100/100/Length	100	100	spec.	spec.
BCS 150/100/Length	150	100	spec.	spec.
BCS 200/100/Length	200	100	spec.	spec.
BCS 250/100/Length	250	100	spec.	spec.
BCS 300/100/Length	300	100	spec.	spec.
BCS 350/100/Length	350	100	spec.	spec.
BCS 400/100/Length	400	100	spec.	spec.

Standard versions

- With integrated switchable magnets
- Use as cross- and length formwork
- Customer-specific designs
- Formwork height up to 400 mm



Different designs



Integrated magnets

Customized products

Deviating from our standard models we also produce according to your special requirements.

