

1

Mount plywood wood and place formwork on table or palette

2

Insert magnet BBM secure hold by special mounts for magnets

3

Position formwork and fix magnets by pressing the button

4

Concreting possible height depends on consistency and vibration



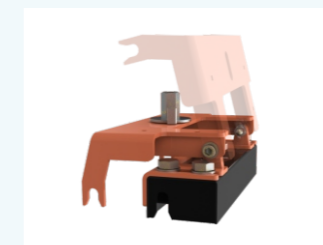
BMS adapter for wood



BMS tension clamp



Magnet BBM XXL for BMS



Magnet BBM XXL with flap adapter



BMS interconnects



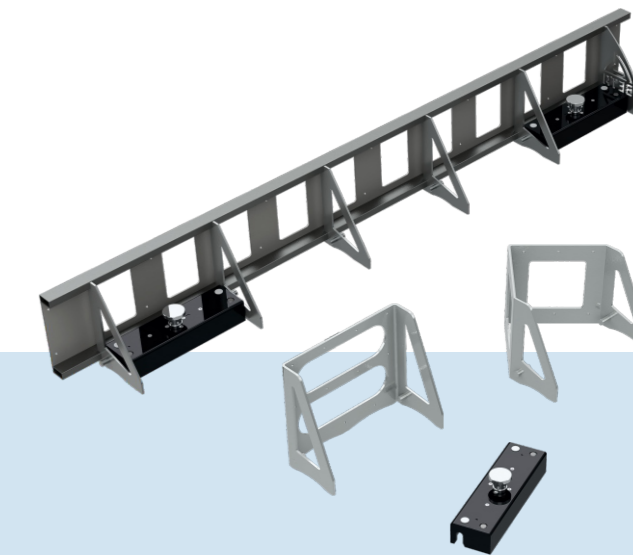
BMS storage rack



Storage rack for BBM magnets



Magnet release tool



Solid formwork

Customized products

Deviating from our standard models we also produce according to your special requirements.

Accessories

Based on the practical experience of our customers, we have developed accessories for the formwork system BMS that covers the usual applications.

The storage rack ensures order in the production hall and prevents the deformation and damage of the formwork parts.

Magnet technology

The BMS formwork system is designed so that each element can be fixed with one or more BBM magnets.

The formwork and magnets have special holders for this purpose and thus enable a secure and millimeter-accurate hold on the formwork foundation, without the use of additional adapters.



Formwork system for manufacturing solid elements



Solid formwork BMS



SCAN

Delivery program

- Length of base elements 1,000 - 6,000 mm
- For shell heights from 100 to 600 mm
- Intermediate element Primus A
- Element for inner corners Primus E
- Custom sizes possible

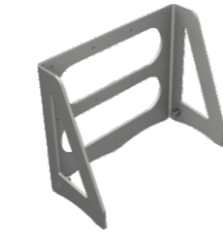
Types BMS

Type	Working height mm	Height mm	Width mm	Length mm	Weight kg
BMS 100/Länge	100-200	95	150	1,000-6,000	5.0
BMS 150/Länge	150-250	145	200	1,000-6,000	6.9
BMS 200/Länge	150-250	195	200	1,000-6,000	7.8
BMS 250/Länge	250-350	245	200	1,000-6,000	8.7
BMS 300/Länge	300-400	295	250	1,000-6,000	10.4
BMS 350/Länge	350-450	345	250	1,000-6,000	13.2
BMS 400/Länge	400-500	395	300	1,000-6,000	14.7
BMS 500/Länge	500-600	495	300	1,000-6,000	16.8

Type	Working height mm	Height mm	Length mm	Height mm
BMS Primus A 100	100-200	95	362	116
BMS Primus A 150	150-250	145	362	116
BMS Primus A 200	200-300	195	362	116
BMS Primus A 250	250-350	245	362	156
BMS Primus A 300	300-400	295	362	166
BMS Primus A 350	350-450	345	362	186
BMS Primus A 400	400-500	395	362	206
BMS Primus A 500	500-600	495	362	256

Type	Working height mm	Height mm	Length 1 mm	Length 2 mm	Height mm
BMS Primus E 100	100-200	95	365	365	326
BMS Primus E 150	150-250	145	365	365	326
BMS Primus E 200	200-300	195	365	365	326
BMS Primus E 250	250-350	245	365	365	326
BMS Primus E 300	300-400	295	365	365	326
BMS Primus E 350	350-450	345	365	365	326
BMS Primus E 400	400-500	395	365	365	326
BMS Primus E 500	500-600	495	365	365	326

BMS
Basic element

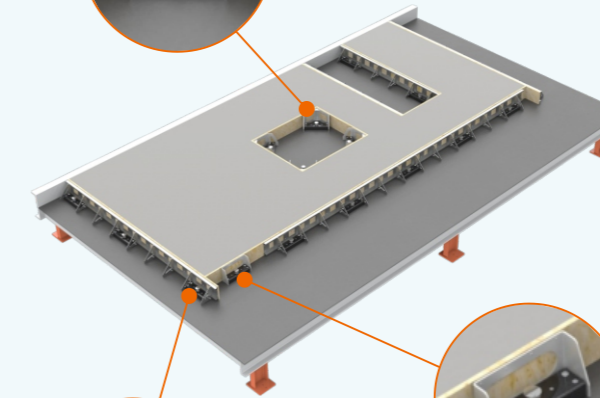


BMS Primus A
Intermediate element

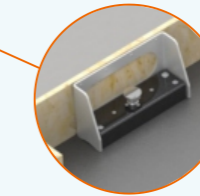
BMS Primus E
Element for inner corner



BMS Primus E 200
for corner formation



Solid formwork BMS 200
as formwork support



BMS Primus A 200
as intermediate element

Formwork system

Our formwork system covers a wide range of applications with elements of different lengths and heights.

In conjunction with BETA formwork magnets, you bring concrete into the right shape.

BMS ensures dimensional stability and surfaces in fair-faced concrete quality and above all it guarantees efficient work.

Applications

The BMS formwork system was specially developed for the production of flat precast concrete elements such as ceilings, walls and facade panels.

Depending on the vibration method and concrete consistency, it can be turned up to 600 mm in height.

Corner and extension elements are available for intermediate steps or cut-outs.

BETA Maschinenbau GmbH & Co. KG
Nordhäuser Straße 2
99765 Heringen
Germany

@ magnettechnik@beta-mb.de

+49 36333 666-210



3D CONFIGURATOR
www.beta-mb.de/ENCOBMS

