

Application with
Solid formwork BMS

Customized products

Deviating from our standard models we also produce according to your special requirements.

Accessories

For box magnets of the BBM series, we offer extensions that can be used with various formwork systems and thus cover a large number of common applications.

With the flap adapter it's possible to release and re-insert formwork parts without changing the position of the magnet.

The release tool is used to release the magnets from the table comfortably in the upright position.



Fixation and holder



Fixation with knurled knob



Down-holder



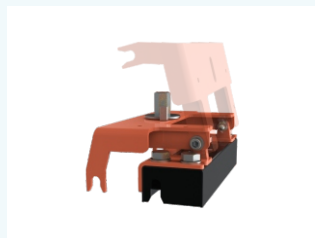
Stop bracket 100 mm



Stop bracket 150 mm



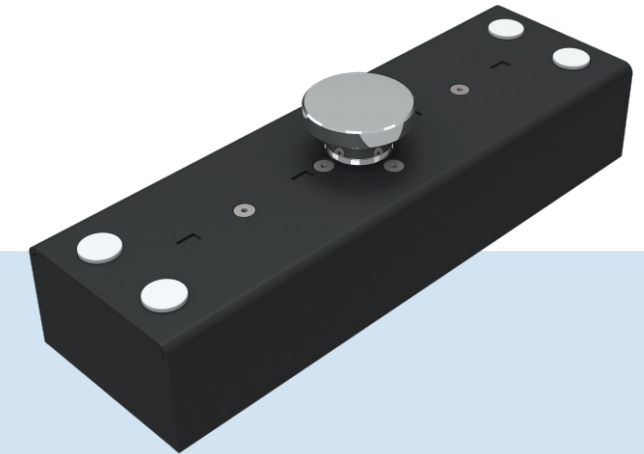
Stop bracket 200 mm



Flap adapter



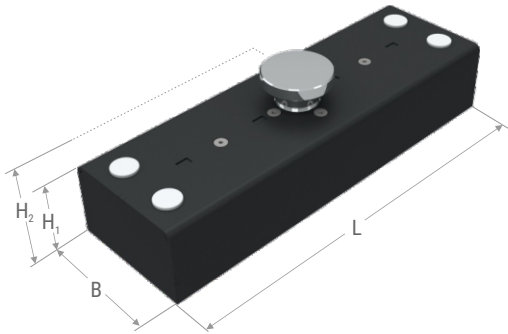
Release tool



Box magnet



Switchable magnet box system with
holding forces from 5,000 to 21,000 N



In the BBM magnet, the magnet is integrated in a powder-coated box to protect against corrosion. The magnet is activated by a push of the button. The integrated threads offer a wide range of expansion and application possibilities.

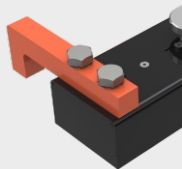
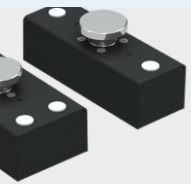
With your details on geometry, quantity and production conditions in the concrete plant, we will be pleased to provide you a suitable offer - designed for high comfort or for frequently changing products.

BETA Maschinenbau GmbH & Co. KG
 Nordhäuser Straße 2
 99765 Heringen
 Germany

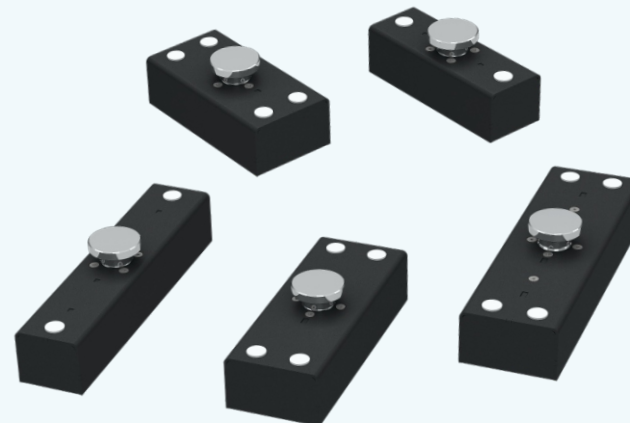
@ magnettechnik@beta-mb.de

+49 36333 666-210

Box magnet BBM



type	force N	L mm	B mm	H ₁ mm	H ₂ mm	weight kg
BBM S	5,000	200	70	60	85	3.0
BBM M	9,000	200	100	60	85	4.3
BBM L	11,000	320	70	60	85	4.9
BBM XL	16,000	260	100	60	85	5.9
BBM XXL	21,000	320	100	60	85	7.4
BBM L BMS	11,000	340	70	60	85	4.9
BBM XXL BMS	21,000	340	100	60	85	7.5



Standard versions

- Holding force 5,000 - 21,000 N
- Standard program with 5 magnet sizes
- Simple and safe operation
- Expandable by integrated threads
- Version for BMS formworks available



3D CONFIGURATOR
www.beta-mb.de/ENCOBBM

